

#GetToKnowMore!

JANUARY TO JUNE 2025



Rethinking CSI in Early Childhood Development is Imperative

This was the core message delivered by our CEO, Warren Farrer, at the Global Forum on Investing in Early Childhood in April. This article unpacks his key insights and learnings drawn from DO MORE's work at the intersection of the corporate and development sectors.

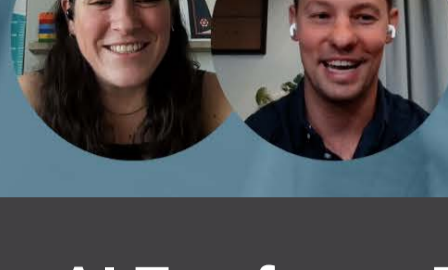
[READ MORE](#)


SEASON TWO

EPISODE 07

Artificial Intelligence (AI) for Impact

With Jessica & Ferdinand



AI Transforms ECD Data Collection

Through its development of the bespoke ELPT Chatbot, Tregter has transformed data collection from ECD practitioners and caregivers enrolled in our EAT LOVE PLAY TALK parent support programme.



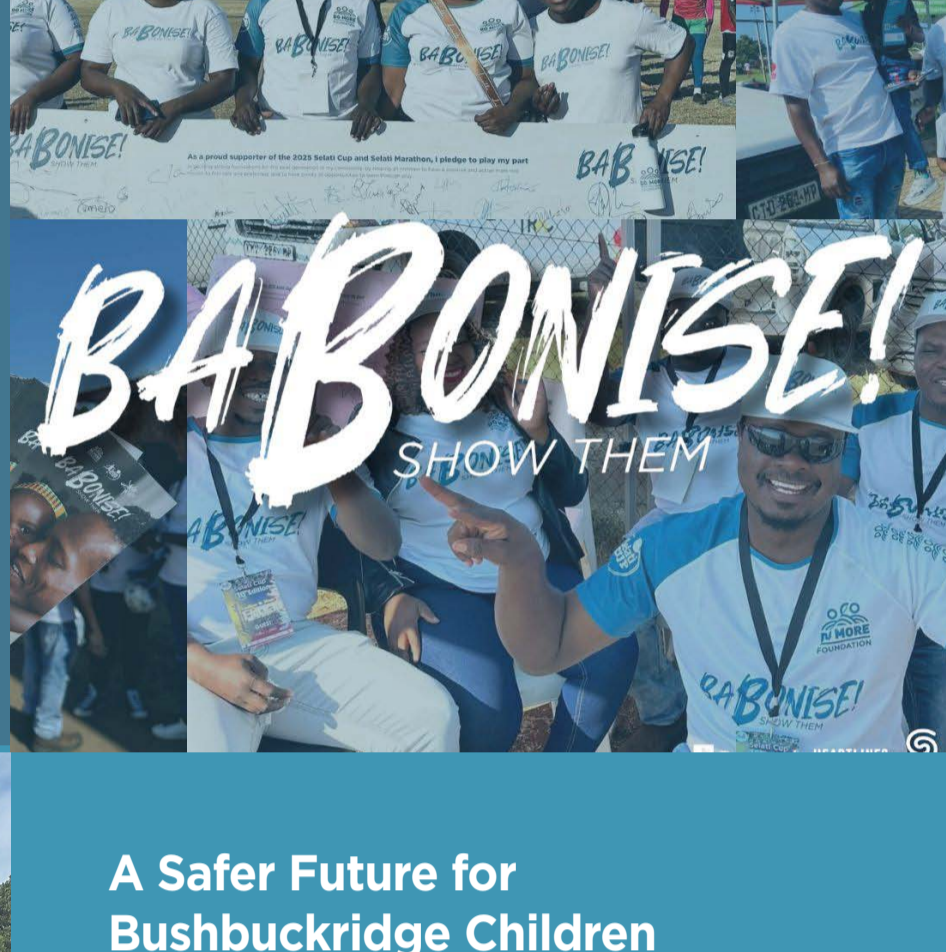
LISTEN



WATCH

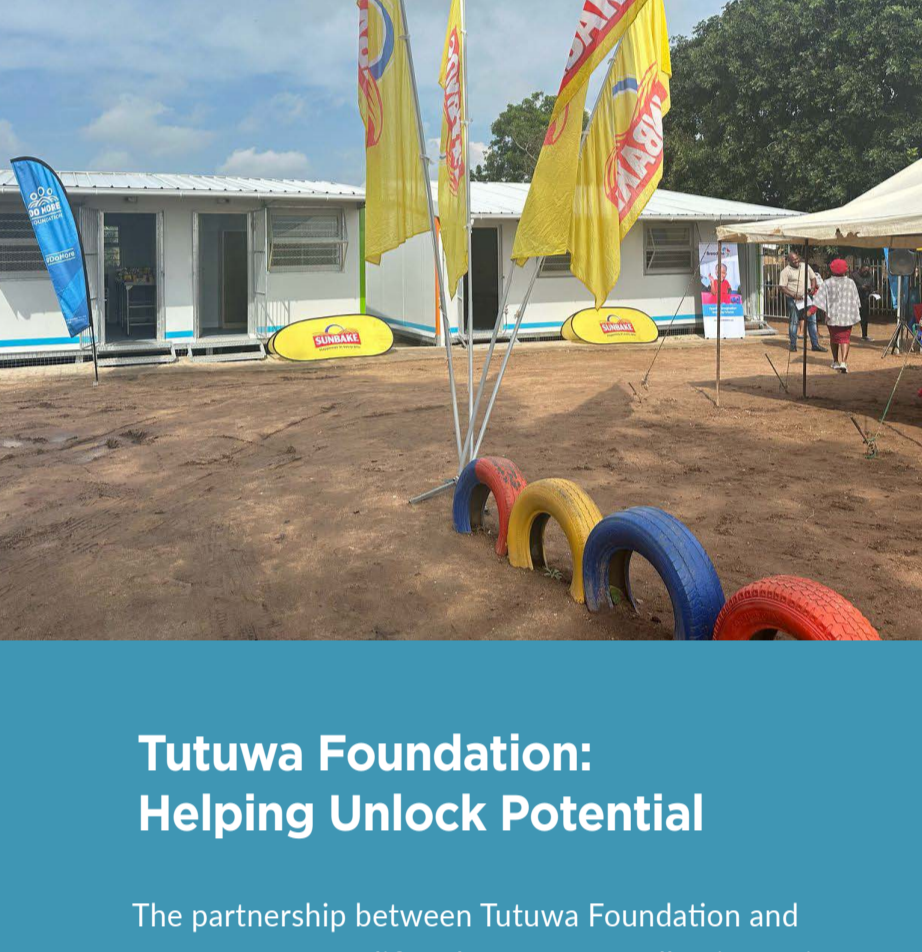
Highlights from the 2025 BaBonise Campaign

BaBonise (Show Them!) is a Selati-DO MORE partnership campaign that calls on the men of Nkomazi to show up in positive ways for their children from the start of their lives. We're celebrating the highlights of this year's campaign.

[READ MORE](#)


A Safer Future for Bushbuckridge Children

The long-awaited upgrade of Johana Mpheto Creche marked a milestone in Bushbuckridge. It reflects what is possible when like-minded partners come together for young children and their right to a safe learning environment.

[READ MORE](#)


Tutuwa Foundation: Helping Unlock Potential

The partnership between Tutuwa Foundation and DO MORE exemplifies the power of collective action in addressing systemic issues and creating meaningful change for young children and their communities.

[READ MORE](#)


Mitsubishi: Supporting Bushbuckridge's ECD ecosystem

The DO MORE and Mitsubishi Corporation collaboration underscores a shared vision of providing holistic solutions for social advancement. Mitsubishi is helping improve ECD outcomes for Bushbuckridge's young children to thrive now and reach their future potential.

[READ MORE](#)

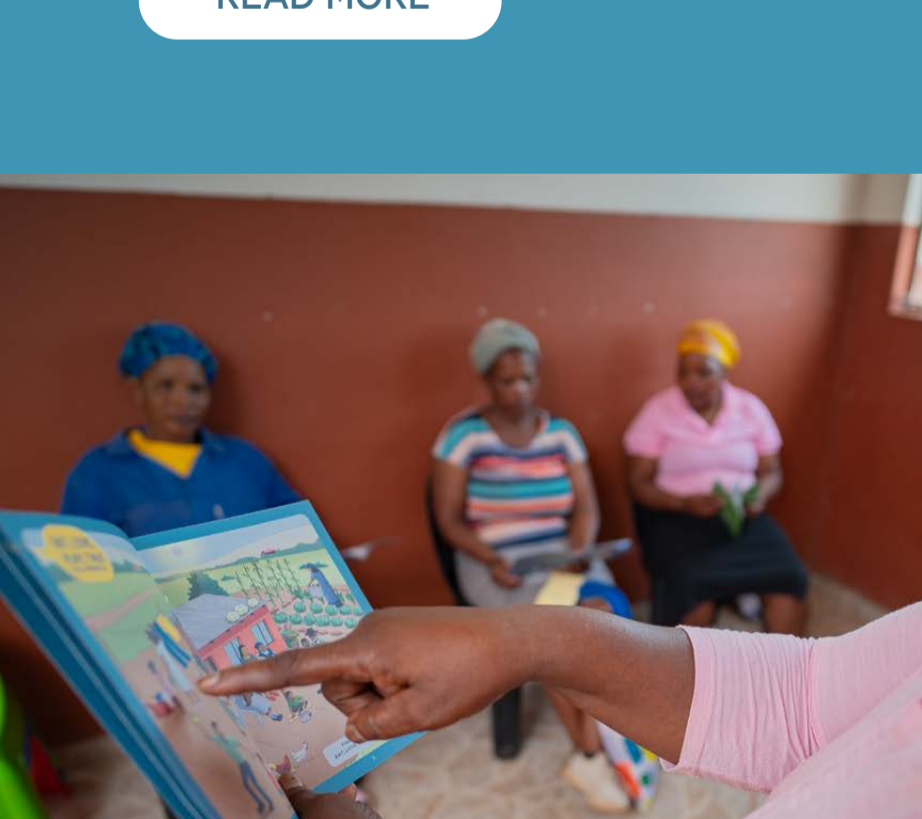

Rainbow Chicken Exemplifies Essence of Ubuntu

Together, Rainbow Chicken and DO MORE are nourishing young minds, strengthening families, and planting the seeds for a hopeful, thriving South Africa. This is a partnership about more than just giving, it's about growing.

[READ MORE](#)


Rama Building Stronger Families

The roll-out of the EAT LOVE PLAY TALK programme with practitioners and parents at eight ECD centres in Boksburg and Bushbuckridge, is thanks to Rama, a DO MORE partner committed to helping build better communities.

[READ MORE](#)


SEASON TWO

EPISODE 01

EAT, LOVE, PLAY, TALK 'for businesses'

with Lungi & Renee



Introducing the 'Floating Mic' Series

Lungile Thabete speaks with Renee Lighton about EAT LOVE PLAY TALK 'for business'. Renee shares her passion for play, early childhood development, and supporting parents.



LISTEN



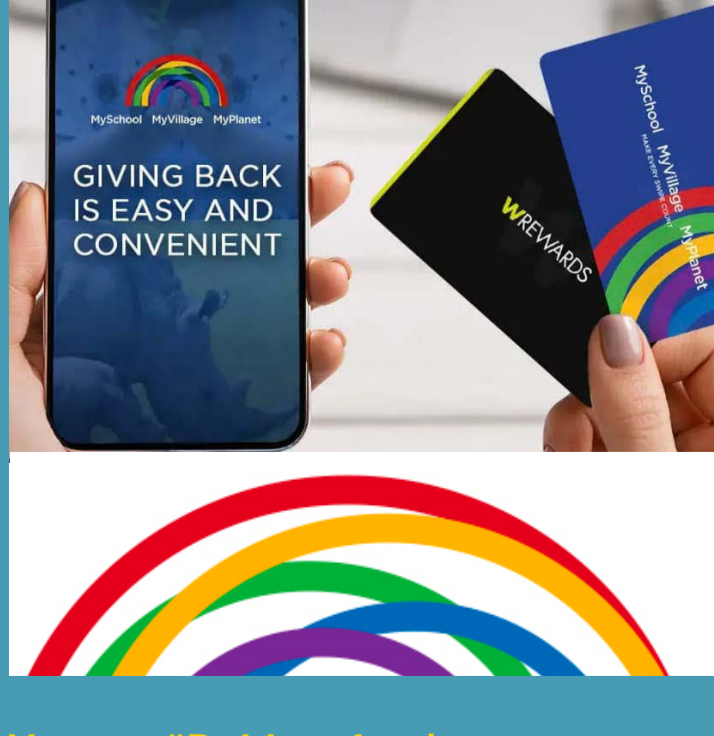
WATCH

Simple ways you can #DoMore.



Shop our new arrivals!

Our playful t-shirt designs and accessories will add a pop of playful personality to your wardrobe.

[SHOP NOW](#)


You can #DoMore for the young children of SA by adding the DO MORE FOUNDATION as a MySchool beneficiary in a few simple steps. The more you swipe, the more you give back!

[ADD US AS A BENEFICIARY](#)

FOLLOW US ON:



Head Office: Westway Office Park, Ten The Boulevard, Westville, 3629

[Subscribe](#) | [Unsubscribe](#)