

#GetToKnowMore!

JANUARY - MARCH 2024



Turning Excess into Essential with Barrows Global: Repurpose for Purpose.

Barrows Global and DMF have reimaged an alternate end-solution for excess business inventory: redirecting it away from our already over-burdened landfills into the hands of over 60,000 young children in over 2,000 ECD centres across South Africa.

[READ MORE](#)

Post-Budget Urgency: A Plea for Business Investment in Early Childhood Development

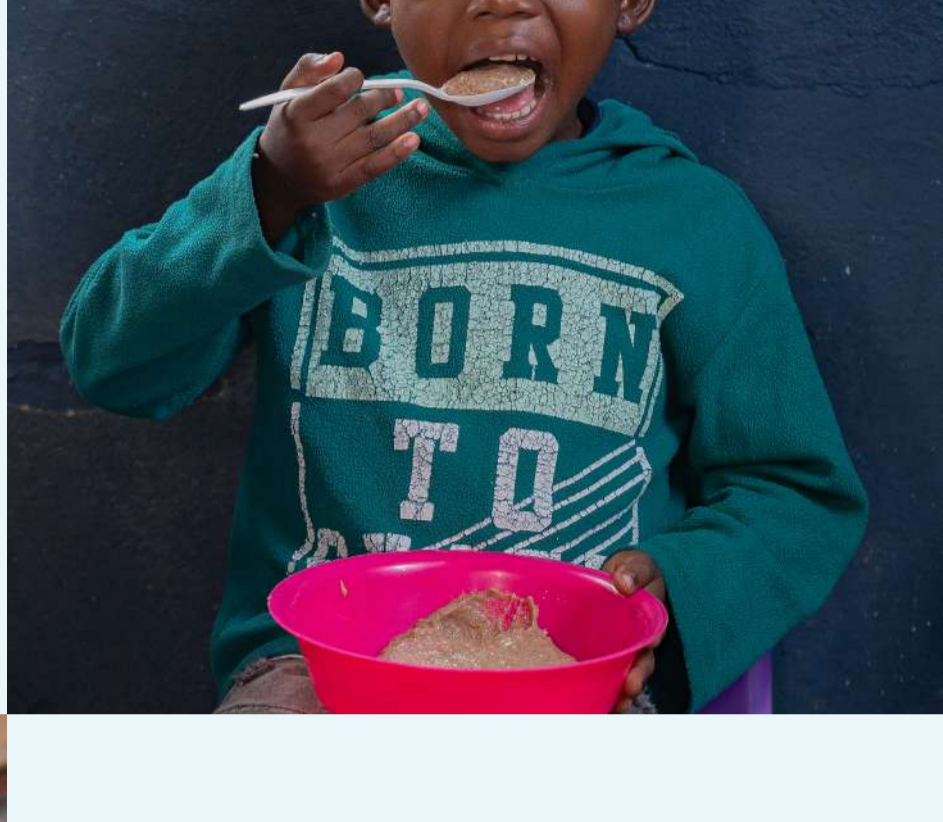


[READ MORE](#)

It Starts with a meal from Ackermans: DoMore Porridge

Ackermans Ububele CSI initiative and The Unlimited Child are an integral part of DMF's holistic nutrition pillar, helping us get DoMore Porridge to over 4 million young children in Hammarsdale (KZN), Soweto (GP), Phillipi and Langa (WC).

[READ MORE](#)



Buckman: Supporting Women Entrepreneurs for a Prosperous Hammarsdale

Buckman Africa's continued funding of the Township Economy Programme in 2023 provided another 20 young women in Hammarsdale (KZN) the opportunity to build a sustainable livelihood, support their families and the broader community.

[READ MORE](#)



CHEP's Double Impact: Investment that Reaches Youth with Disabilities and Young Children

CHEP's long-term partnership with DMF scaled up in 2023 to upskill 66 youth with disabilities and send wooden toy boxes to 18,360 young children. Added to that is the daily bowl of DoMore Porridge given to 495 children each day they attended their ECD centre for 12 months.

[READ MORE](#)



DMF Joins South Africa Parent Implementers Network (SAPPIN)

DMF is now a registered member of SAPPIN, the South African Parenting Programme Implementers Network, a network of 14 civil society organisations across SA works to develop and implement high-quality parenting/caregiver programmes built on evidence-based, community-driven research.

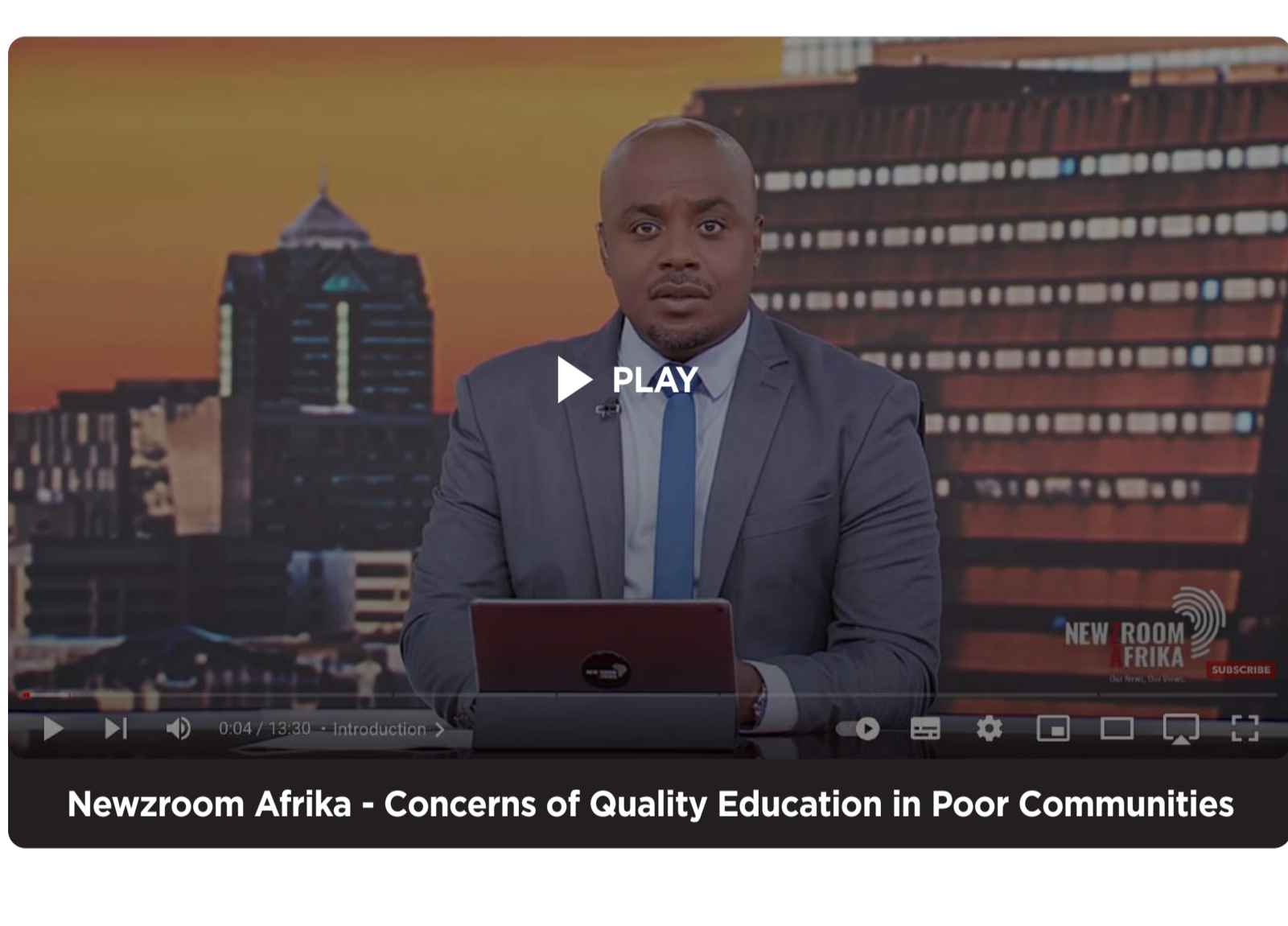
[READ MORE](#)



2022 Añit Prize Winner and DMF Celebrate Nationwide Impact of EAT LOVE PLAY TALK Programme on ECD Outcomes for SA's Children

A year on from winning the prestigious Mandela Rhodes Foundation Añit Prize, Dr Jessica Ronaasen, National Programmes Lead at DMF, and key partners have uplifted 42 ECD centres in six vulnerable communities across South Africa through the parent education programme EAT LOVE PLAY TALK (ELPT).

[READ MORE](#)



Newroom Afrika - Concerns of Quality Education in Poor Communities



Rustenburg's Month: Rustenburg's Day Mother Programme

DMF and Early Care Foundation are working in five Rustenburg communities to empower 13 Day Mothers to better achieve the rights of the 80 children under their care.

[READ MORE](#)



Human Rights Month: Bushbuckridge's Young Child Forums

Connecting ECD practitioners and Government is crucial to achieve children's rights in seven Bushbuckridge communities.

[READ MORE](#)

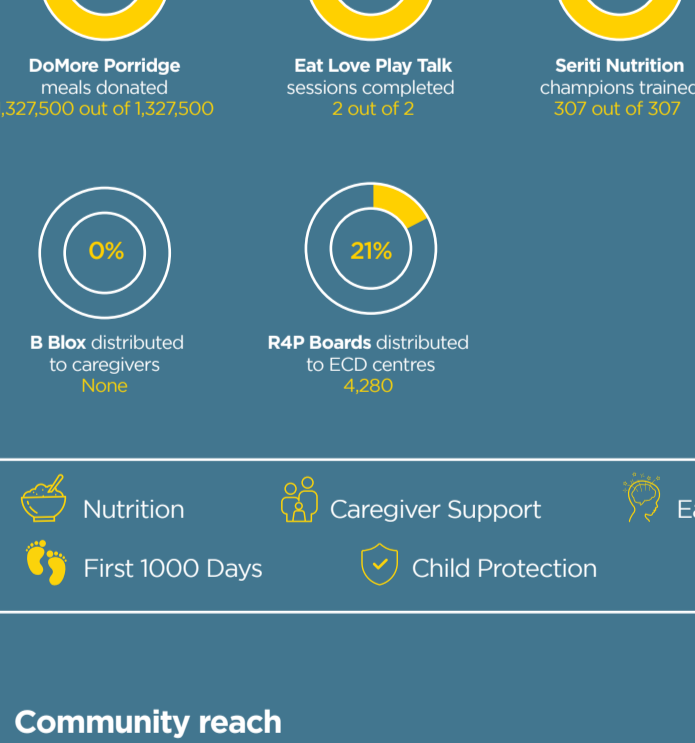


Join our team, esteemed partners and thought leaders as we delve into the complexities of the ECD and non-profit space.

[LISTEN](#) [WATCH](#)

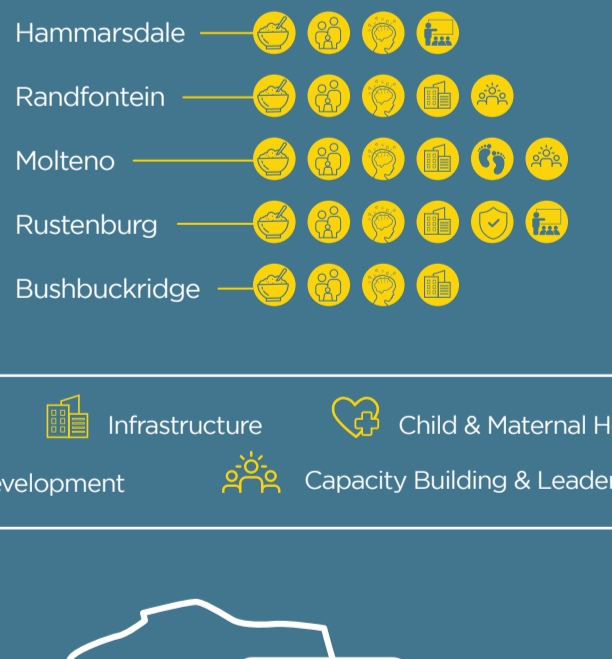
DMF Dashboard - Q3 Jan - Mar 2024

Scaling out - National Programmes



Scaling deep - Community Programmes

*Note: Click on the community to see the latest newsfeed and stats.



- Nutrition
- Caregiver Support
- Early Learning
- Infrastructure
- Child & Maternal Health
- First 1000 Days
- Child Protection
- Enterprise Development
- Capacity Building & Leadership

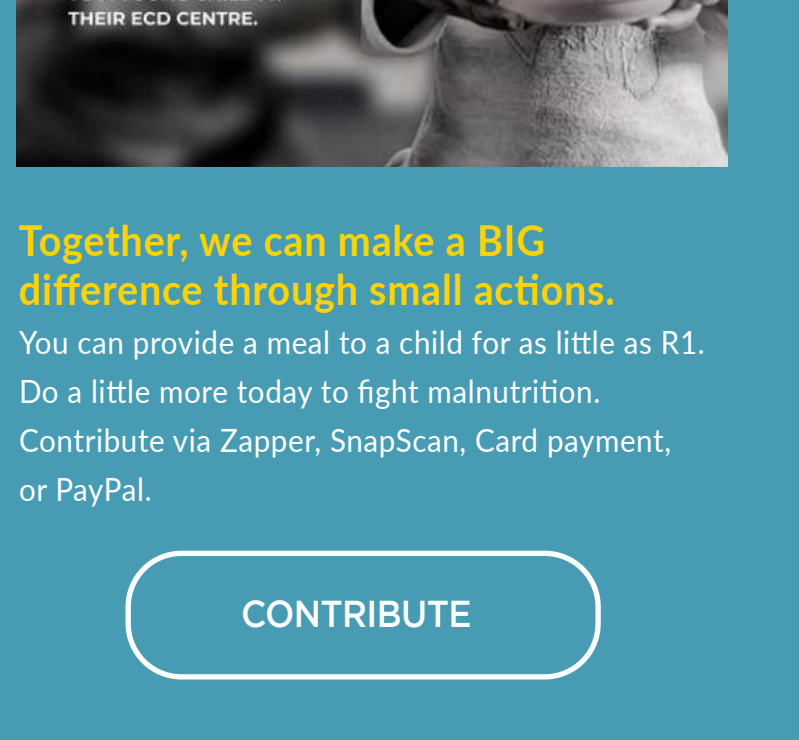
Community reach

*New communities in yellow



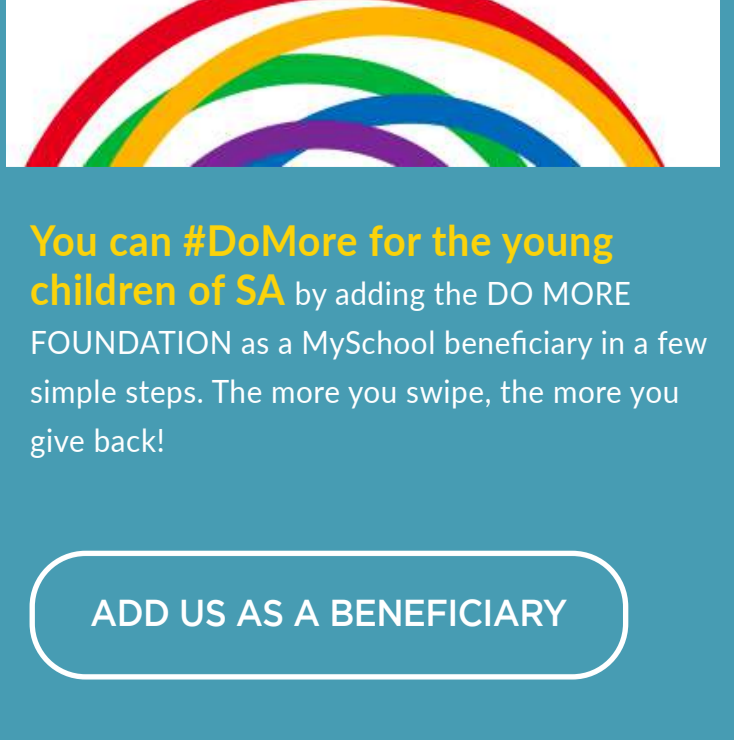
- Do More Porridge support to ECD programmes
- Short dated stock donations
- Everyone Gets to Play community development
- Heroes local ECD centre adoption & employee volunteerism

Simple ways you can #DoMore this month



Little by little... We can #DoMore!

EVERY RAND YOU GIVE UP HELPS US PROVIDE A MEAL TO A YOUNG CHILD AT THEIR ECD CENTRE.



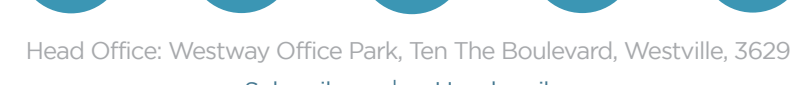
GIVING BACK IS EASY AND CONVENIENT

Together, we can make a BIG difference through small actions. You can provide a meal to a child for as little as R1. Do a little more today to fight malnutrition. Contribute via Zapper, SnapScan, Card payment, or PayPal.

[CONTRIBUTE](#)

[ADD US AS A BENEFICIARY](#)

FOLLOW US ON:



Head Office: Westway Office Park, Ten The Boulevard, Westville, 3629
Subscribe | Unsubscribe